



# **Le Clos Sara, St. Lawrence, Jersey**

JERSEY



## Le Clos Sara, St. Lawrence, Jersey

JERSEY

### TYPE

 **Bungalow**

### BEDROOMS

 **2**

### BATHROOMS

 **1**

### RECEPTIONS

 **1**

### PARKING

 **4**

## About this Property

Tucked away on a lovely corner plot, this detached (two bedrooms, one bathroom with separate WC ) bungalow has been a cherished home for many years and enjoys beautifully established gardens that wrap around the property, offering a wonderful sense of privacy. The garden is a particular feature, thoughtfully planted and lovingly maintained, creating a colourful and secluded outdoor space to enjoy throughout the seasons. A bright conservatory provides the perfect spot to sit and take in the surroundings. Internally, the property now offers clear scope for modernisation, giving buyers the opportunity to create a home tailored to their own style. Further benefits include a garage, store unit, parking and a covered entrance, all adding to the practicality of this appealing home.

- ✓ Detached bungalow
- ✓ 2 bedrooms 1 bathroom
- ✓ Beautiful garden
- ✓ Garage
- ✓ Plus 2/3 parking spaces
- ✓ Storage
- ✓ Refurb project

### Book a viewing

01534 879787

hello@sломans.co.uk

sломans.co.uk

SALE AGREED

**£725,000**

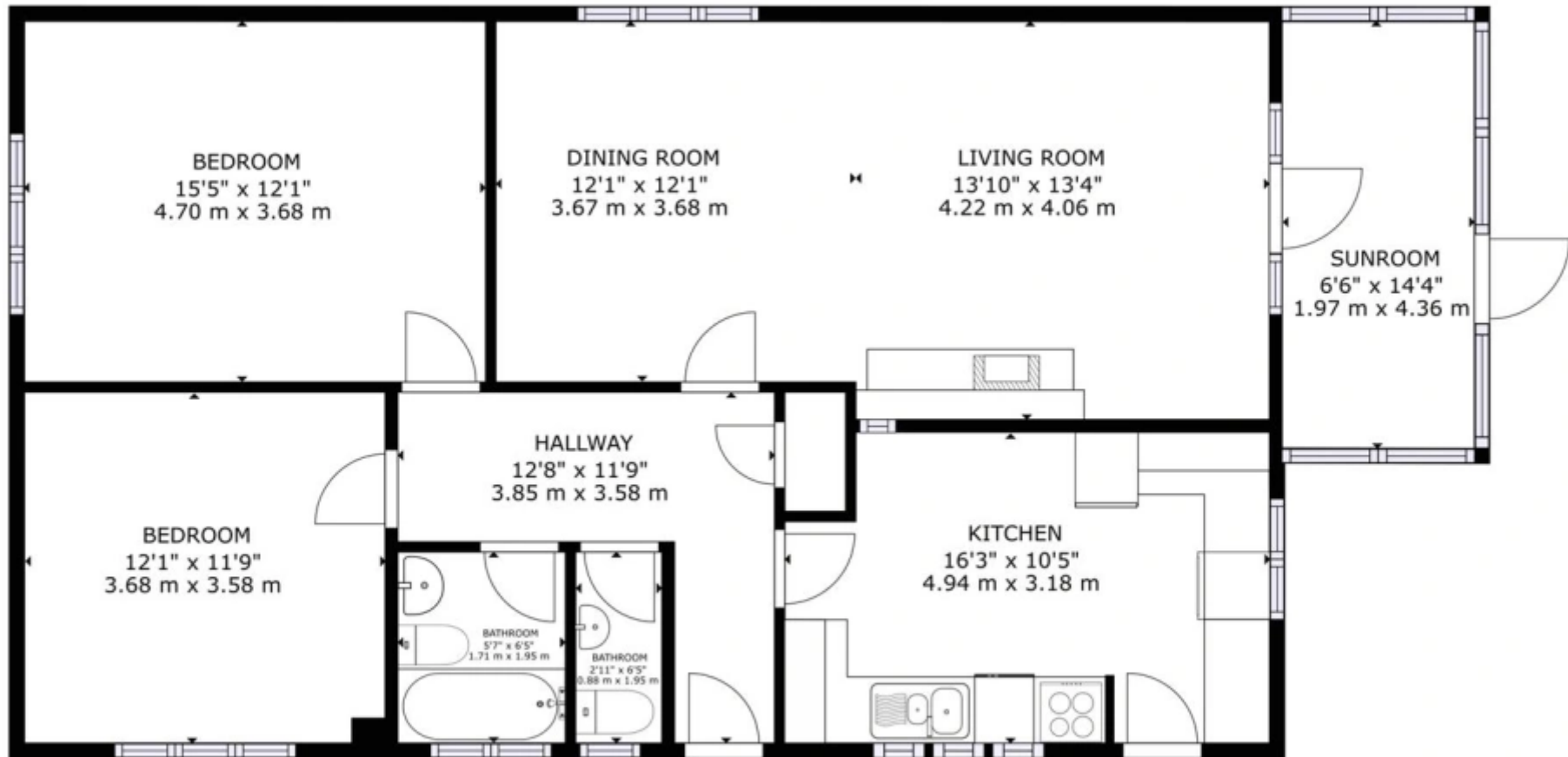












GROSS INTERNAL AREA  
 FLOOR 1: 1104 sq ft, 102.55 m<sup>2</sup>  
 TOTAL: 1104 sq ft, 102.55 m<sup>2</sup>  
 SIZES AND DIMENSIONS ARE APPROXIMATE, ACTUAL MAY VARY.



Tim Barnes- Classical & Flamenco Guitar...



Club Carrefour



David Hick Interiors

La Rue du Douet de Rue

Le Passage

Le Passage

Clos Sara

La Rue Sara Henri

La Ruelle

La Rue

La Rue

A10

La Rue Parcqthee



Slomans Estate Agents  
17 La Colomberie  
St Helier  
Jersey  
JE2 4QB

## Book a viewing

**Contact us directly to schedule your viewing**

01534 879787  
info@slomans.co.uk  
slomans.co.uk

**Anti Money Laundering Regulation:** Once an offer is accepted and negotiations for the purchase of a property are entered into, the prospective purchasers will be asked to produce photographic identification (passport or driving licence) and proof of residency documentation eg, a current utility bill together with confirmation of source of funds. This is in order for us to comply with the current Money Laundering Legislation