



La Rue De L'etau, St. Helier, JE2

JERSEY



La Rue De L'etau, St. Helier, JE2

JERSEY

TYPE

 **Apartment**

BEDROOMS

 **2**

BATHROOMS

 **2**

RECEPTIONS

 **1**

PARKING

 **2**

Book a viewing

01534 879787

hello@slomans.co.uk

slomans.co.uk

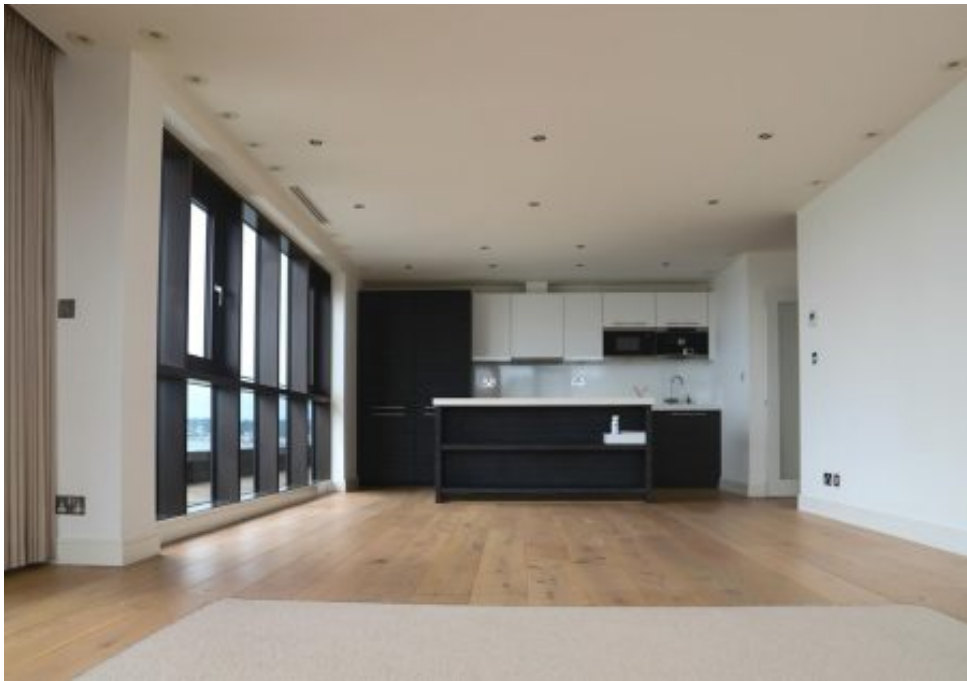
TO LET

£4,000

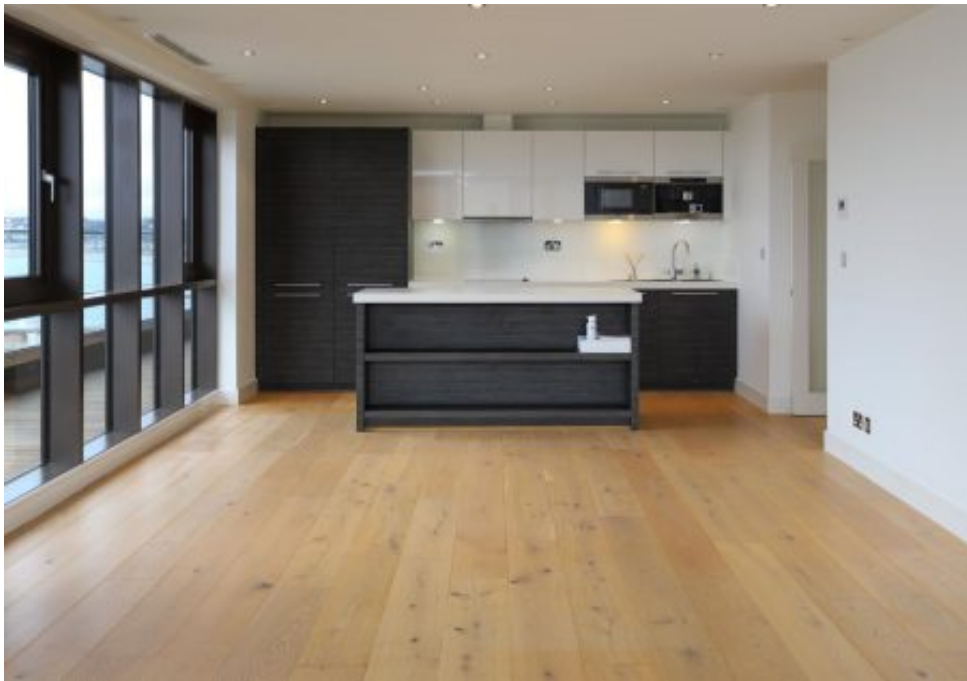
About this Property

Enjoy the luxury life style of Castle Quay and the superb panoramic views across the whole of St Aubin's Bay, A stylish two bedroom, two bathroom sleek apartment which enjoys one of the best locations in St Helier, with superb amenities all close at hand. The apartment overlooks the Elizabeth marina and you can enjoy the vista and the stunning sunsets from the large wrap around balcony which is the length of the whole apartment and can be accessed from the living area and both bedrooms. There is lift access to the apartment and two secure undercover parking. Qualified. Available early December.

- ✓ Luxury Apartment
- ✓ Far Reaching Viewings
- ✓ Large Wrap Around Balcony
- ✓ Undercover Parking for Two Cars
- ✓ Excellent Condition
- ✓ All Kitchen Appliances Integrated
- ✓ Built in Wardrobes
- ✓ Separate Utility
- ✓ Intercom













Slomans Estate Agents
17 La Colomberie
St Helier
Jersey
JE2 4QB

Book a viewing

Contact us directly to schedule your viewing

01534 879787
info@slomans.co.uk
slomans.co.uk

Anti Money Laundering Regulation: Once an offer is accepted and negotiations for the purchase of a property are entered into, the prospective purchasers will be asked to produce photographic identification (passport or driving licence) and proof of residency documentation eg, a current utility bill together with confirmation of source of funds. This is in order for us to comply with the current Money Laundering Legislation