



La Greve D'azette, St. Clement, JE2

JERSEY



La Greve D'azette, St. Clement, JE2

JERSEY

TYPE

 **Apartment**

BEDROOMS

 **2**

BATHROOMS

 **1**

RECEPTIONS

 **1**

PARKING

 **1**

About this Property

PRIVATE ACCESS TO THE BEACH

Brise de Mer Apartments provide stylish seaside living, quite literally on the sea wall, with panoramic beach views across Greve D'Azette towards Les Minquiers and benefiting from all day sunshine. This apartment is close enough to walk to town if you prefer not to take the car, the property is also close to a local amenities and is on an excellent bus route. This ground floor apartment offers two bedrooms with built in wardrobes and matching side tables, one bathroom and a good size sitting room with direct access to the patio and the beachfront. The south facing patio directly overlooks the bay and has access to steps that lead directly onto the beach.

One allocated parking space.

- ✓ Private balcony right onto the beach
- ✓ Modern two bed apartment
- ✓ Easy access to town either walking or on bus
- ✓ Harve de Pas area within walking distance with restaurants

Book a viewing

01534 879787

hello@sломans.co.uk

sломans.co.uk

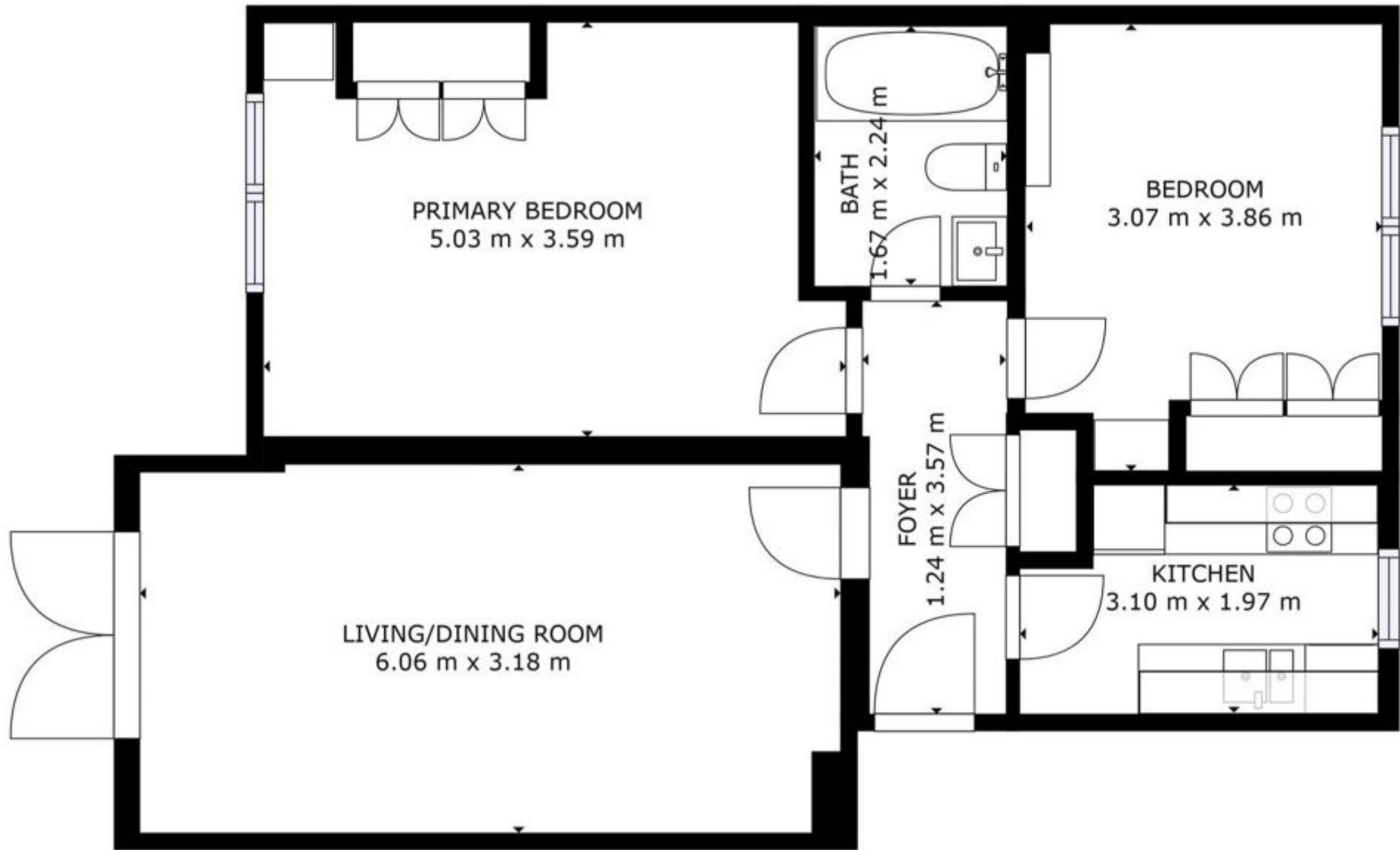
FOR SALE

£675,000









GROSS INTERNAL AREA
FLOOR 1: 66 m²
TOTAL: 66 m²

SIZES AND DIMENSIONS ARE APPROXIMATE, ACTUAL MAY VARY.

FLOOR 1





Slomans Estate Agents
17 La Colomberie
St Helier
Jersey
JE2 4QB

Book a viewing

Contact us directly to schedule your viewing

01534 879787
info@slomans.co.uk
slomans.co.uk

Anti Money Laundering Regulation: Once an offer is accepted and negotiations for the purchase of a property are entered into, the prospective purchasers will be asked to produce photographic identification (passport or driving licence) and proof of residency documentation eg, a current utility bill together with confirmation of source of funds. This is in order for us to comply with the current Money Laundering Legislation