



Flat 2 Southlands

JERSEY



Flat 2 Southlands

JERSEY

TYPE

 Flat

BEDROOMS

 1

BATHROOMS

 1

RECEPTIONS

 1

PARKING

 1

About this Property

Located on a good bus route and just a short stroll from the beach front, this spacious apartment offers convenient, low-maintenance living in a popular location. A variety of restaurants, cafés and local amenities are all close by, along with scenic walks and beachfront activities. The bright lounge is a real feature of the property, offering plenty of living space together with a contemporary media wall complete with inset shelving. The kitchen is well laid out with a good range of cupboards and worktop space, whilst the generous double bedroom benefits from built-in wardrobes. The bathroom is fully tiled and fitted with a modern white suite with a shower over the bath. Further benefits include new electric heating, an allocated parking space and four visitor parking spaces. The property is professionally managed by Brunel Property Management, with a current service charge of £331.53 per quarter.

An ideal purchase for a first-time buyer, investor or someone looking to enjoy a convenient coastal lifestyle.

Book a viewing

01534 879787

hello@sломans.co.uk

sломans.co.uk

FOR SALE

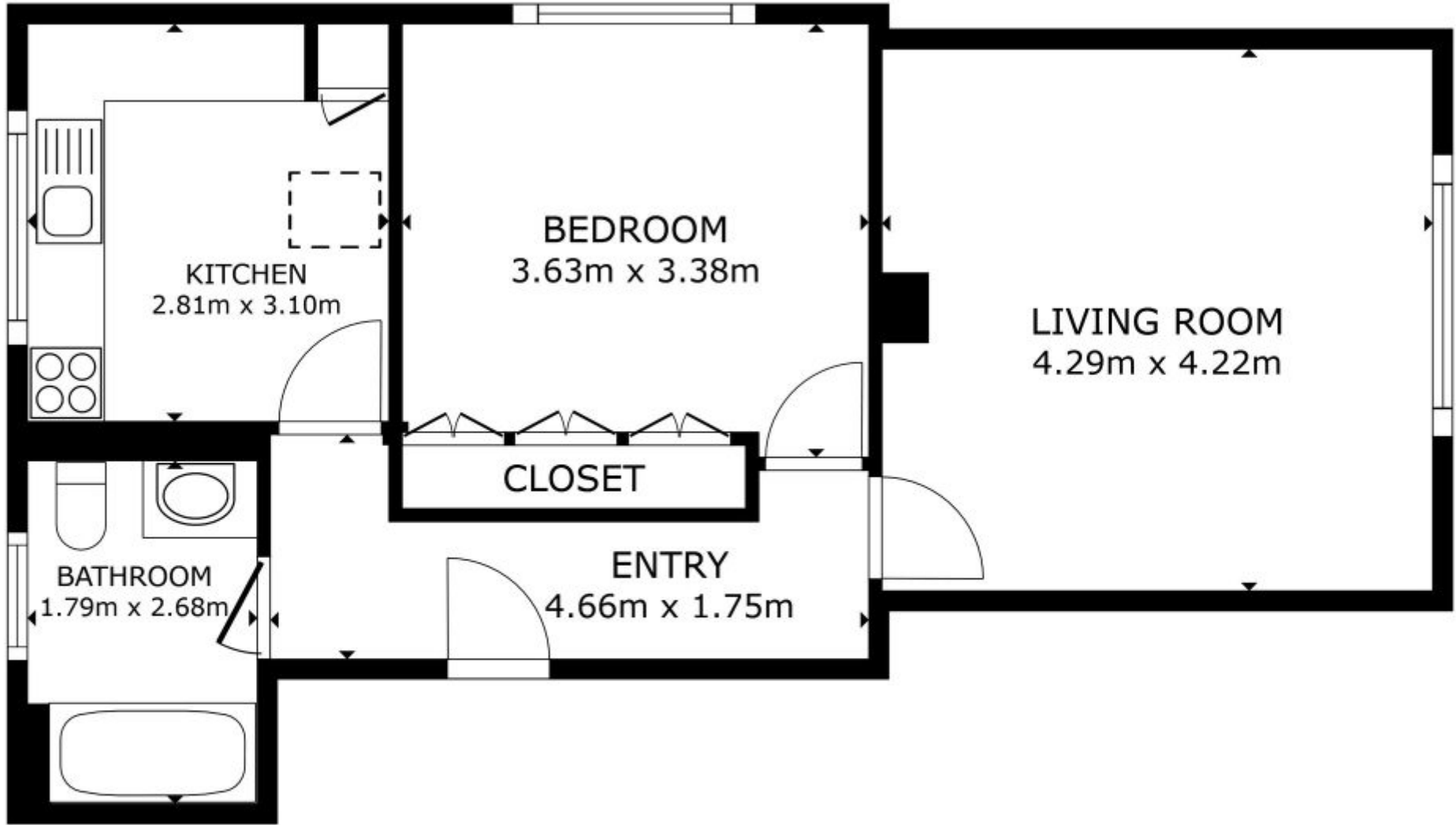
£360,000

Key Features

- ✓ Location Location Location
- ✓ A stones throw to the beachfront
- ✓ Local restaurants on your doorstep
- ✓ Spacious one bedroom apartment
- ✓ One allocated parking space
- ✓ Four shared visitor parking spaces
- ✓ Excellent bus route



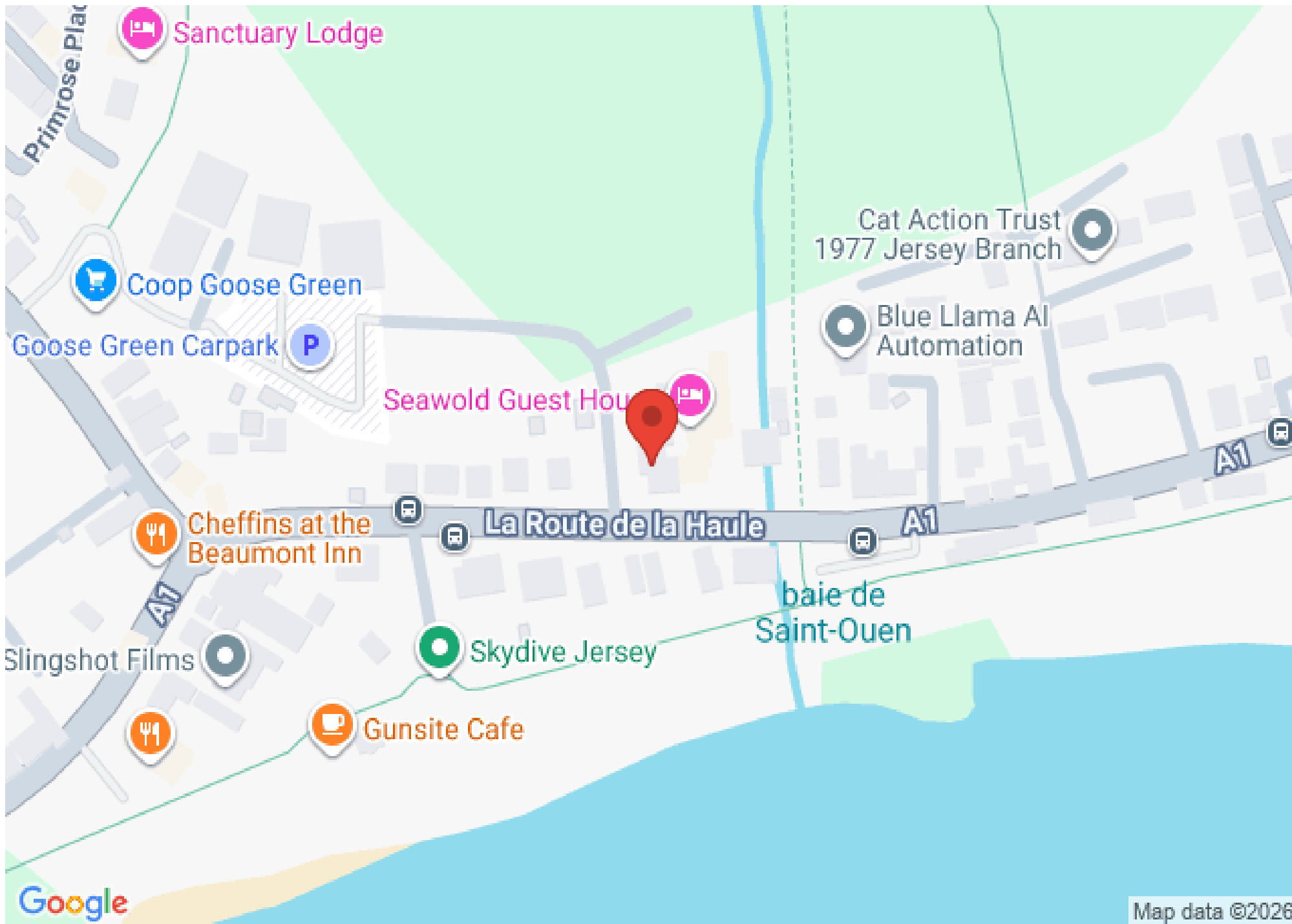




FLOOR PLAN

GROSS INTERNAL AREA
FLOOR PLAN 52.9 m²
TOTAL : 52.9 m²

SIZES AND DIMENSIONS ARE APPROXIMATE, ACTUAL MAY VARY.



Sanctuary Lodge

Primrose Plac

Coop Goose Green

Goose Green Carpark

Seawold Guest House

Cat Action Trust
1977 Jersey Branch

Blue Llama AI
Automation

Cheffins at the
Beaumont Inn

La Route de la Haule

A1

Slingshot Films

Skydive Jersey

baie de
Saint-Ouen

Gunsite Cafe

Gunsite Cafe

Google

Map data ©2026



Slomans Estate Agents
17 La Colomberie
St Helier
Jersey
JE2 4QB

Book a viewing

Contact us directly to schedule your viewing

01534 879787
info@slomans.co.uk
slomans.co.uk

Anti Money Laundering Regulation: Once an offer is accepted and negotiations for the purchase of a property are entered into, the prospective purchasers will be asked to produce photographic identification (passport or driving licence) and proof of residency documentation eg, a current utility bill together with confirmation of source of funds. This is in order for us to comply with the current Money Laundering Legislation