



# Avondale, La Rue des Buttes, St Mary

JERSEY



## Avondale, La Rue des Buttes, St Mary

JERSEY

### TYPE

 **House**

### BEDROOMS

 **4**

### BATHROOMS

 **1**

### RECEPTIONS

 **3**

### PARKING

 **2**

FOR SALE

**£795,000**

### Book a viewing

01534 879787

hello@sломans.co.uk

sломans.co.uk

## About this Property

OPEN VIEWING THIS SATURDAY 11th JULY 10.30 - 11.15

Presented to the market is this spacious four-bedroom terraced house, offering an exceptional opportunity for families and professionals seeking a comfortable and versatile home.

Upon entering, you are welcomed by a bright and inviting hallway that leads through to a generously proportioned living room, ideal for both relaxing and entertaining guests. The property boasts a modern fitted kitchen with ample storage and integrated appliances (perfect for those who enjoy cooking or hosting dinner parties), as well as a separate dining area that provides a wonderful space for family meals or casual gatherings. Each of the four bedrooms is thoughtfully designed to maximise space and light, with the principal bedroom benefiting from built-in wardrobes. The additional bedrooms are equally well-sized, making them suitable for children, guests, or use as a home office or study. The main family bathroom is stylishly appointed with a three-piece suite, including a bath-tub and overhead shower, while a downstairs cloakroom adds further practicality for busy households. Throughout the property, tasteful décor and quality finishes create a warm and welcoming atmosphere, complemented by double glazing and efficient central

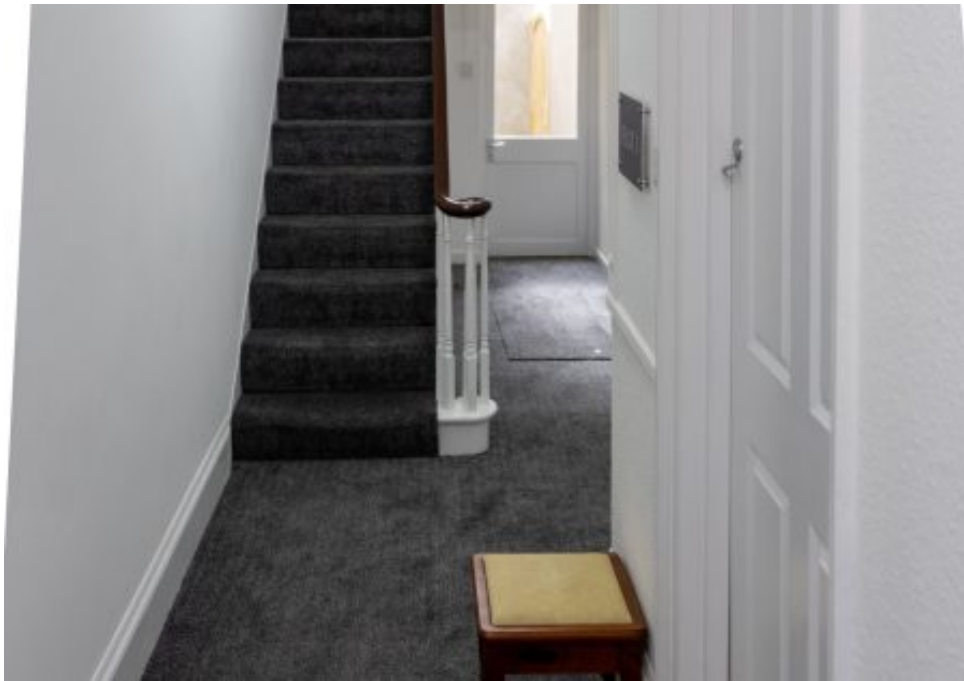
## **About this Property (continued)**

heating for year-round comfort. Additional features include useful storage cupboards and a utility area, ensuring day-to-day living is both organised and stress-free. This property is ideally situated within easy reach of local amenities, reputable schools, and excellent transport links, making it an attractive choice for commuters and families alike. Whether you are looking to upsize, relocate, or secure a well-presented home in a popular residential area, this four-bedroom terraced house offers the perfect blend of space, style, and convenience. Early viewing is highly recommended to fully appreciate the generous accommodation.

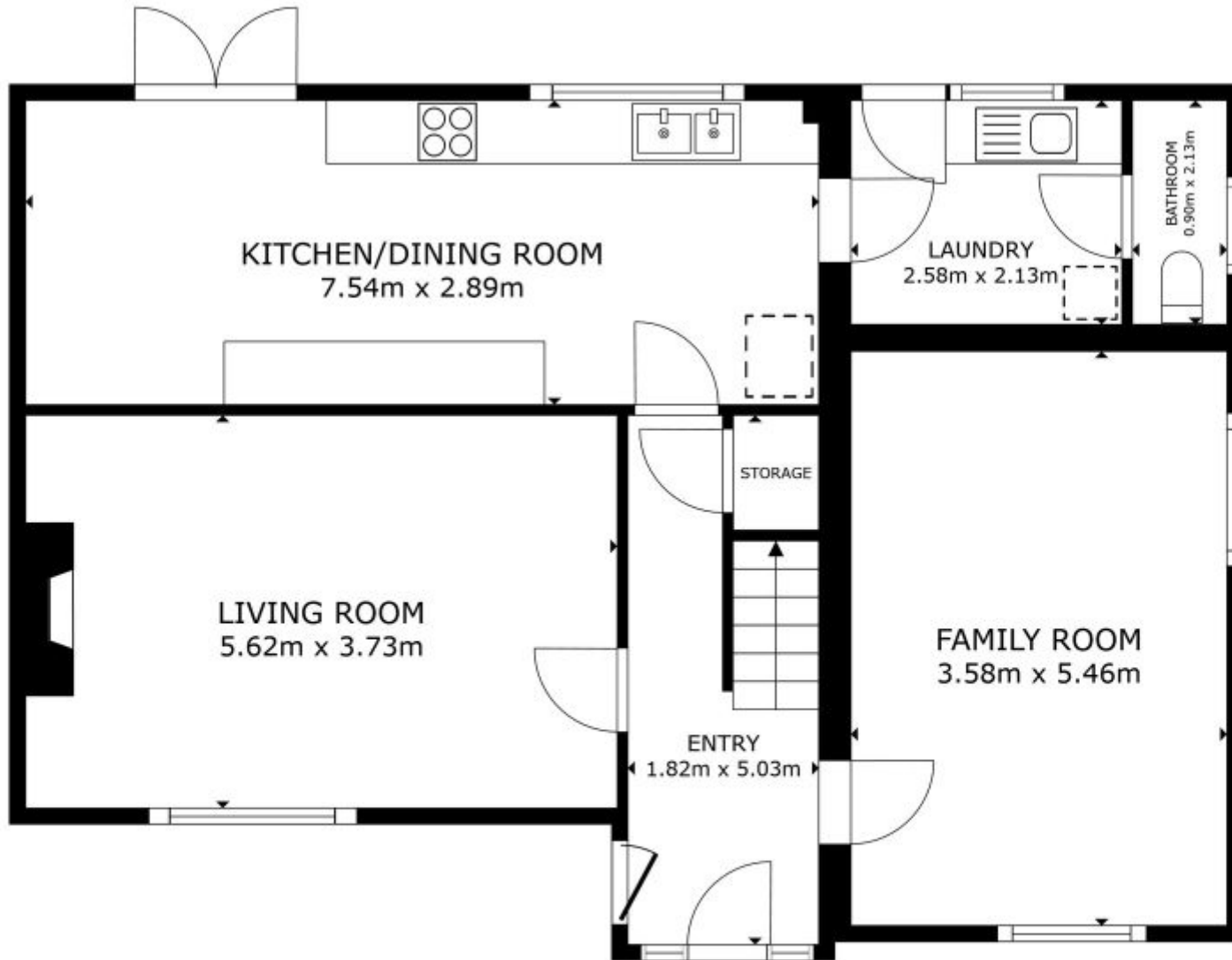
What3Words///exempt.voltage.having











FLOOR 1

GROSS INTERNAL AREA  
FLOOR 1 83.5 m<sup>2</sup> FLOOR 2 80.5 m<sup>2</sup>  
TOTAL : 164.0 m<sup>2</sup>

SIZES AND DIMENSIONS ARE APPROXIMATE, ACTUAL MAY VARY.







Slomans Estate Agents  
17 La Colomberie  
St Helier  
Jersey  
JE2 4QB

## Book a viewing

**Contact us directly to schedule your viewing**

01534 879787  
info@slomans.co.uk  
slomans.co.uk

**Anti Money Laundering Regulation:** Once an offer is accepted and negotiations for the purchase of a property are entered into, the prospective purchasers will be asked to produce photographic identification (passport or driving licence) and proof of residency documentation eg, a current utility bill together with confirmation of source of funds. This is in order for us to comply with the current Money Laundering Legislation