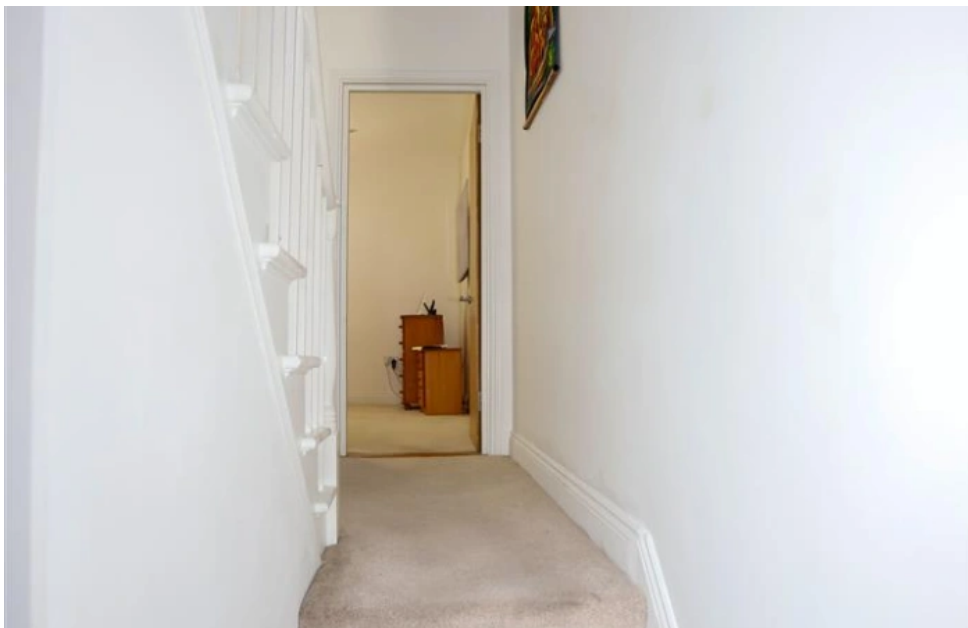




## 27 La Colomberie

ST HELIER



## 27 La Colomberie

ST HELIER

### TYPE

 **Flat**

### BEDROOMS

 **2**

### BATHROOMS

 **1**

### RECEPTIONS

 **1**

### PARKING

 **0**

## About this Property

This spacious town maisonette, spanning three levels, is perfect for those who love town living. Presented in excellent condition, it features two large double bedrooms, an eat-in kitchen, a comfortable living room, plus a generously sized bathroom. With over 800 sq ft of living space, this property offers exceptional value. Located close to all town amenities, it provides easy access to work, shopping, the gym, Howard Davies Park and the beachfront, making this an ideal home for anyone who is looking to enjoy everything St Helier has to offer. Additional features include electric heating, a flying freehold, and no onward chain. Must be viewed to be appreciated. What3Words: things.testing.song.

- ✓ New Instruction
- ✓ Incredibly spacious apartment
- ✓ 2 large double bedrooms
- ✓ Well presented throughout
- ✓ No onward chain

### Book a viewing

01534 879787

hello@slomans.co.uk

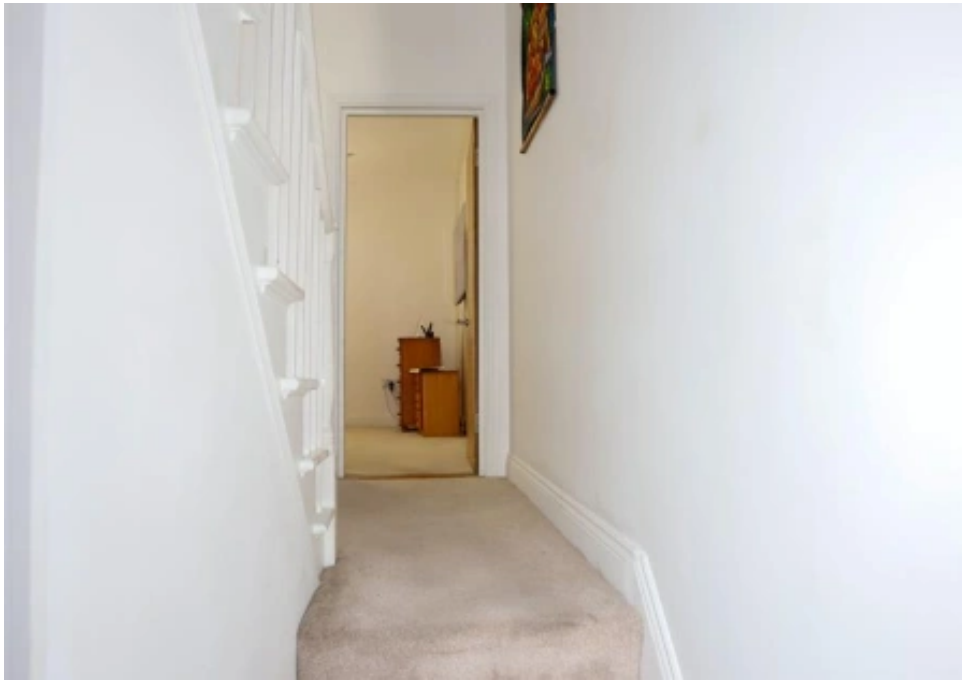
slomans.co.uk

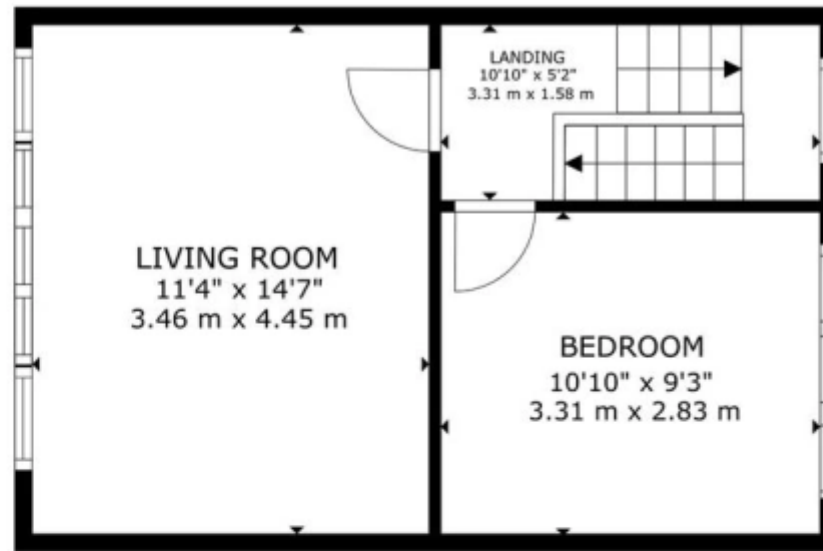
FOR SALE

**£429,000**

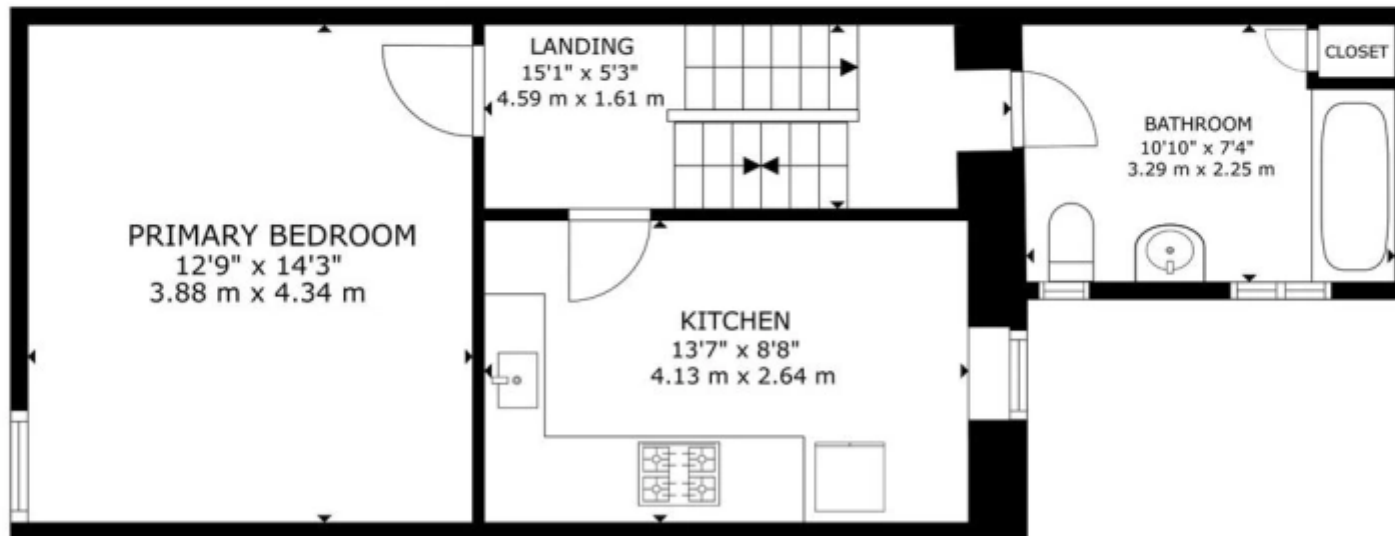








FLOOR 2



FLOOR 1

GROSS INTERNAL AREA  
 FLOOR 1: 481 sq. ft, 45 m<sup>2</sup>, FLOOR 2: 329 sq. ft, 30 m<sup>2</sup>  
 TOTAL: 810 sq. ft, 75 m<sup>2</sup>  
 SIZES AND DIMENSIONS ARE APPROXIMATE, ACTUAL MAY VARY.





Slomans Estate Agents  
17 La Colomberie  
St Helier  
Jersey  
JE2 4QB

## Book a viewing

**Contact us directly to schedule your viewing**

01534 879787  
info@slomans.com  
slomans.co.uk

**Anti Money Laundering Regulation:** Once an offer is accepted and negotiations for the purchase of a property are entered into, the prospective purchasers will be asked to produce photographic identification (passport or driving licence) and proof of residency documentation eg, a current utility bill together with confirmation of source of funds. This is in order for us to comply with the current Money Laundering Legislation