

Two Generation Home North Coast

A peaceful coastal retreat offering space,
flexibility and countryside views.



Slomans

hello@slomans.co.uk
01534 879787



A flexible family home

£1,250,000 - Freehold

Tucked away on a private track just off the North Coast, this well-maintained detached bungalow offers the rare combination of seclusion, versatility and scope. Thoughtfully arranged over a single level with a self-contained one-bedroom annex, it's perfectly suited to multi-generation living, guests, or additional income.

The main house provides three to four double bedrooms, an inviting eat-in kitchen, utility room and spacious living room opening onto a bright, recently added conservatory. essence of island life.



Key Features:

- Detached bungalow with self-contained annex
- Three to four double bedrooms in main house
- One bedroom annex
- Large conservatory with countryside views
- Eat-in kitchen and utility room
- Attractive gardens with glasshouses
- Double garage and generous parking
- Private, secluded setting near the North Coast
- Ideal for two-generation living or letting potential





At the heart of this welcoming home is a bright, well-planned kitchen and dining area - the natural hub of daily life. Generous in size and filled with natural light, it's a space designed for easy family living and relaxed conversation.

The adjoining dining room provides plenty of room for shared meals or quiet mornings overlooking the garden. Large windows draw in the countryside views, while the neutral tones and warm timber finishes create a calm, homely atmosphere.

Every part of the home has been maintained with care, offering comfort, practicality and scope to make it your own. Whether enjoying the conservatory on a sunny afternoon or gathering around the table with family, this is a home that feels instantly liveable.



hello@slomans.co.uk
01534 879787

Bright and inviting, the main reception rooms are defined by their generous windows and open outlook. The principal sitting room combines comfort and elegance, with a traditional fireplace as its centrepiece.





Peaceful and well-proportioned, the bedrooms offer a restful retreat with soft natural light and simple, timeless décor. The bathrooms are neatly finished, combining comfort and practicality with a clean, contemporary feel.



hello@slomans.co.uk
01534 879787

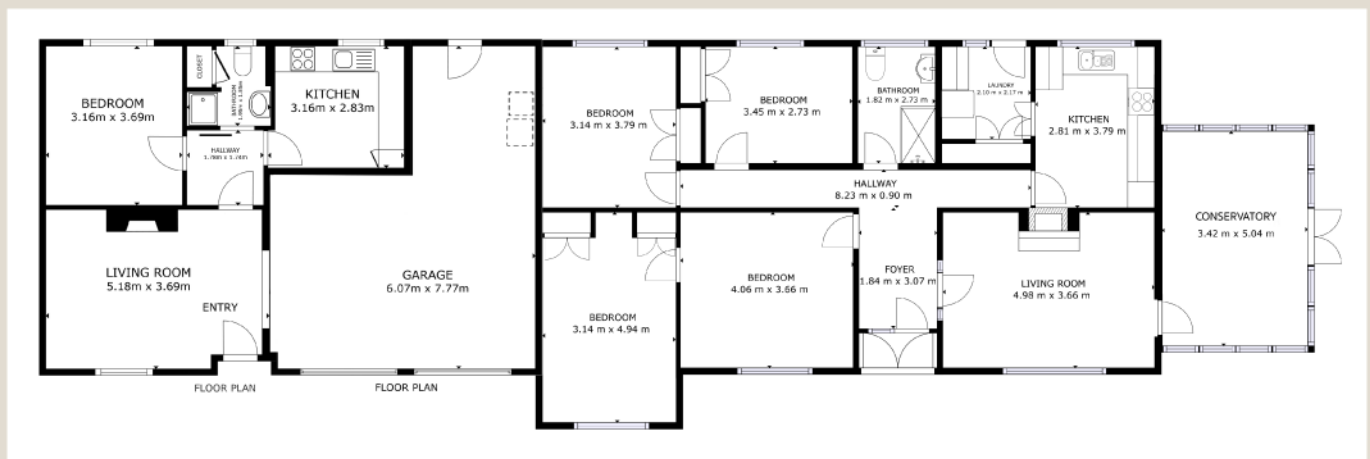


A versatile, well-connected layout

Designed with flexibility in mind, the property's layout flows naturally across a single level — ideal for family life or two-generation living. The main house and annex are cleverly divided, offering privacy without compromising connection.

The principal accommodation includes spacious living and dining areas, a bright kitchen leading to the conservatory, and four comfortable bedrooms. The self-contained one-bedroom annex has its own kitchen, living room and bathroom - equally suited for extended family, guests or rental use.

With generous proportions throughout and direct access to the gardens from multiple rooms, this is a home that adapts easily as your needs change.



Approximate Room Measurements

Main House

Living Room: 4.98m x 3.66m
 Conservatory: 3.42m x 5.04m
 Kitchen: 2.81m x 3.79m
 Bedroom 1: 4.06m x 3.66m
 Bedroom 2: 3.45m x 2.73m
 Bedroom 3: 3.14m x 3.79m
 Bedroom 4: 3.14m x 4.94m
 Bathroom: 1.82m x 2.73m
 Laundry: 2.10m x 2.17m
 Hallway: 8.23m x 0.90m
 Foyer: 1.84m x 3.07m

Annex

Living Room: 5.18m x 3.69m
 Kitchen: 3.16m x 2.83m
 Bedroom: 3.16m x 3.69m
 Bathroom: 1.78m x 1.71m
 Hallway: 1.78m x 1.17m

Garage

6.07m x 7.77m

First Time On Market

Get in touch to arrange to view this
exceptional property



Directions: From St John, head east past Funghi Delceti on the left.
The property is down the next track on right hand side.
[///resist.pompom.glove](http://resist.pompom.glove)

hello@slomans.co.uk
01534 879787